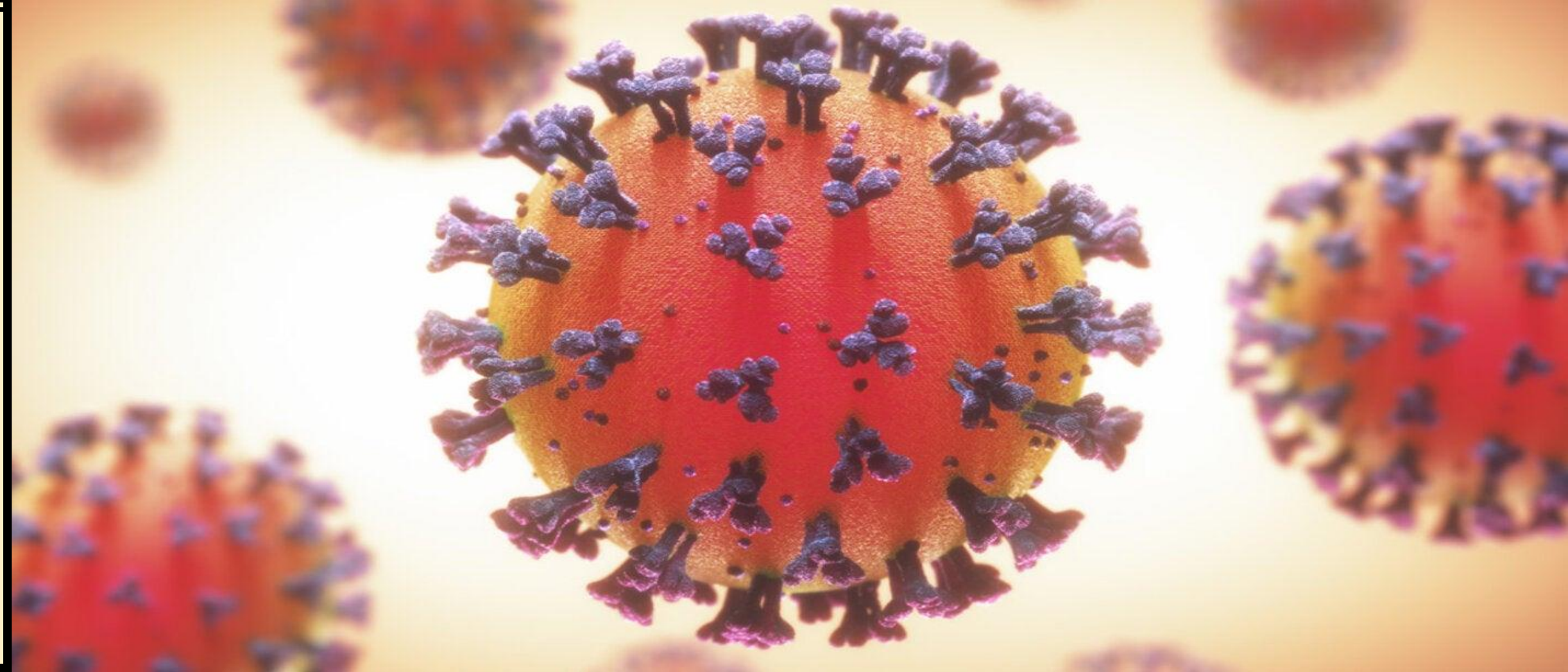
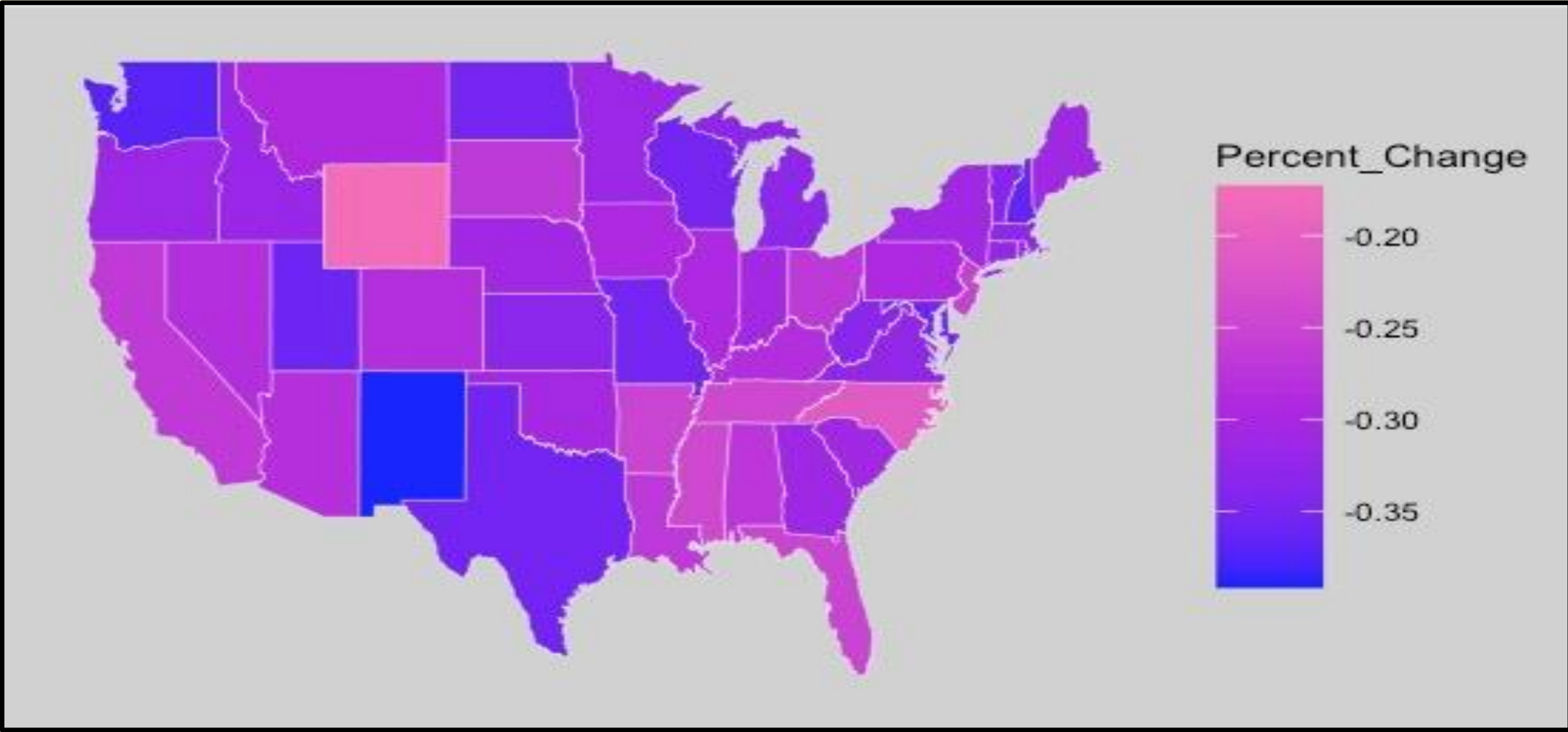


Effects of Political Affiliation on Air Travel During Covid-19

Coleton Kanzmeier, Collin Miller, Josh Napora, Logan Noonan, Wendy Wei
University of Nebraska Omaha, Mathematics Department



Nationwide Changes in Load Factor



Above looks at the percent change of load factor in flights from 2019 to 2020. We determined the political affiliation of each state based on the last election (can be either republican, democratic, or swing).

State Specific Air Travel Restrictions

New Mexico

March 27, 2020 – 14 day quarantine for all travelers who enter the state through an airport.

Washington

Nov 13, 2020 – 14 day quarantine on all travelers.
Apr 6, 2021 – Lifted quarantine order.

Wyoming

Apr 3, 2020 – 14 day quarantine for all travelers.
May 7, 2020 (34 days later) – Lifted quarantine order.

North Carolina

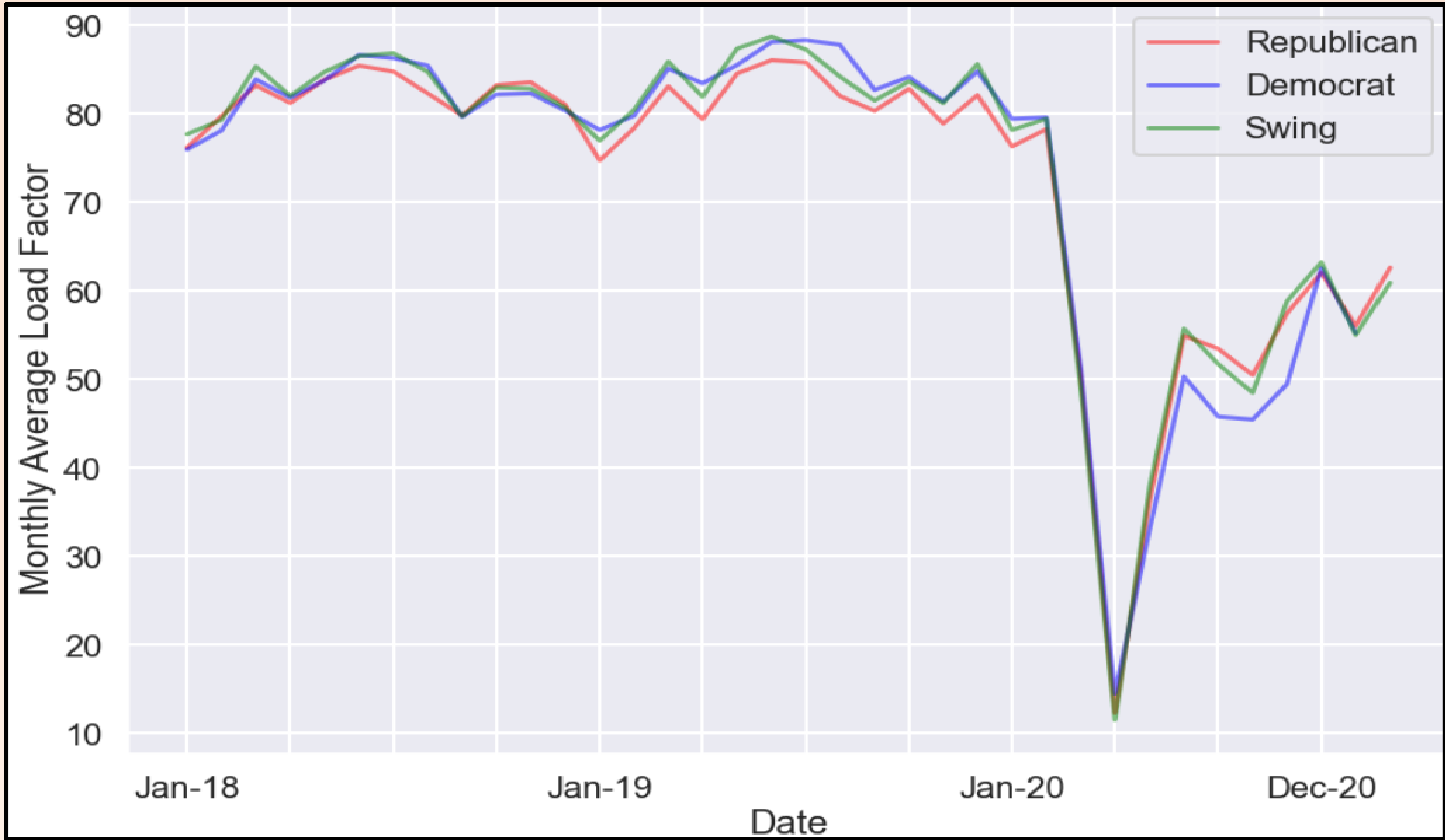
None

Political Affiliation	State	Change in Load Factor
Democrat	New Mexico	-39.0%
Democrat	Washington	-37.0%

Political Affiliation	State	Change in Load Factor
Republican	Wyoming	-17.0%
Republican	North Carolina	-21.0%

Change in load factor looks at the average load factor in 2020 against the average load factor in 2019. As theorized, liberal states experienced a more significant drop in load factor. This suggests the beliefs of the people of those states.

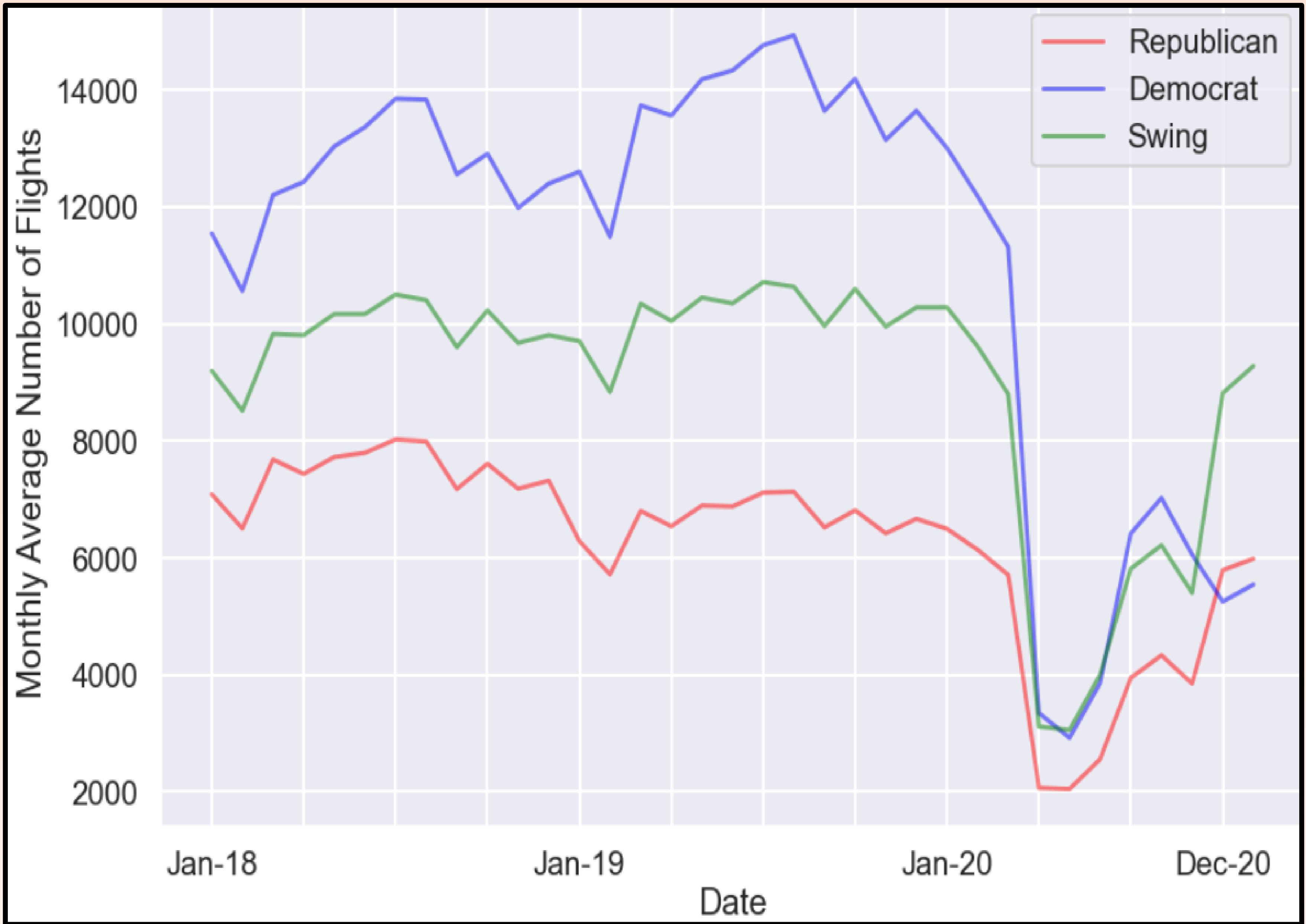
Load Factor Comparison by Party



Here we can see that pre-covid load factors were steady and similar for all states, regardless of political affiliation. After the covid shutdown, Republican and Swing states began a slightly quicker rise back to a normal load factor. These states, as a whole, also plateaued at around 5% higher load factor than the Democratic states.

Flights Comparison by Party

The time series on the right shows the combined monthly average number of flights of all states, with respect to political affiliation. All states saw a significant drop in flights at the beginning of the Covid 19 pandemic. What is more surprising is difference in how states rebounded. Republican and Swing states were nearly back to full flight capacity by the end of 2020 while Democratic states were only back up to 40% normal capacity.



Political Affiliation	Monthly Average # of Flights '19	Percent Returned by end '20
Republican	6649	90.0%
Swing	10157	91.37%
Democrat	13685	40.51%

